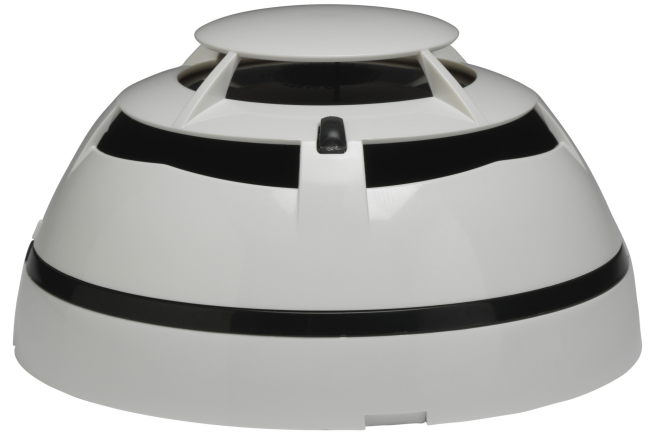


Intelligent Heat Detector

The Axis-HTX intelligent Heat Detector is a point detection device that continuously samples for temperature variation in the protected area to provide the earliest warning of a fire condition in areas where traditional smoke detection products are not suitable.

This detector is characterised by an aesthetically pleasing low profile and is specifically designed for Axis EN control panels.



Features

- Two thermal sensitivity levels: Rate of Rise (A1R) and Class BS
- Bi-directional isolator to protect against cable faults
- Utilises Axis EN protocol with high noise rejection
- Dual bi-colour LEDs providing 360° cone of visibility
- Open style mounting base offers easy wiring and low pressure locking
- Addressing and sensitivity settings using the Device Programming Tool or Auto addressing capability via the fire control panel
- Magnet test capability

Standards & Approvals

- BS EN 54-5: Point Heat Detectors
- BS EN 54-17: Short Circuit Isolators

Specification

Loop Voltage (*)	18-40 V _{dc}
Average Standby Current	85 µA @ 24V _{dc}
Remote Output Max Current	20 mA
Max number of loop addresses	240
Operating Temperature Range	-10°C / +55°C
Humidity (non condensing)	95% RH
Dimensions H x D	60 x 110 mm

Weight (Standard Base included)	130 g
(*) Product operates down to 15 V, but without LED indication.	

Order Codes and Options

Axis-HTX	Intelligent Heat Detector
Axis-MB	Base
Axis-SAMB	Slave Sounder Base
Axis-SVAMB	Slave Sounder Beacon Base
Axis-SMB	Intelligent Sounder Base
Axis-SVMB	Intelligent Sounder Beacon Base
Axis-WP	Silcon Base Gasket

[Check if this document is up to date](#) | [Give us feedback](#)

Advanced, Moorland Way, Cramlington, Northumberland, NE23 1WE, UK **T:** +44 (0)1670 707 111, **E:** enquiries@advancedco.com, **W:** www.advancedco.com

As our policy is one of constant product improvement the right is therefore reserved to modify product specifications without prior notice.